



PITSON TRANSMISSION TECHNOLOGIES
Gearing Solutions



GEARING SOLUTIONS

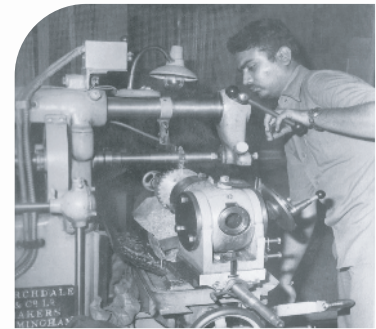


PITSON TRANSMISSION TECHNOLOGIES
Gearing Solutions

www.pitsongears.com

About Us

A family business of manufacturing gears since more than 50 years in local market of Gujarat & India.



3 Generations, 50 successful years and we have a long and interesting history with deep experience of various applications to provide Gearing Solutions.

Principal state-of-the-art manufacturing facility is located at Surendranagar and consists of “gear” manufacturing workshop with service facility.

Throughout the history we have been a company that cares for people. This means we serve our clients with high interest and take good & individual care of our workers well-being & all our customers.

Our Product lines include standard enclosed gear drives, gears and custom speed reducers.

WHY CHOOSE US ?

Engineering Excellence

We take pride that we are **PITSON TRANSMISSION TECHNOLOGIES**. We are committed to maintaining the engineering excellence needed to meet and exceed our customers' expectations. So, whether you need a standard unit or custom design, we have the engineering capability to provide optimized designs for your application needs.

Customer Service

Our dedicated team have customer centric approach are always available to assist with quick responses to customer's immediate needs.

Flexible Manufacturing

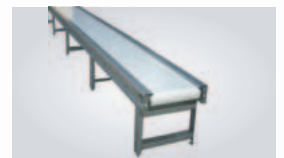
Whether the need is a lot or just a few at a time, we are able to rapidly respond to the needs of our customers. Our system is designed and allowing us to get the products out the door and into the hands of the customer quicker and with quality.

Our Products

NW Series Worm Gearbox

FEATURES

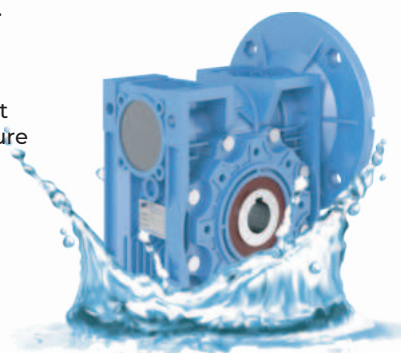
- SKF/FAG "2RS/ZZ" shielded bearings for double leakage protection & universal mounting position.
- Pre-filled fully synthetic Glygoyle VG-320/460 oil. a oo
- Viton oil seals for high temperature applications. .
- Optional Anti-Corrosion chemical surface treated Aluminium body.
- Gear Ratio: 5:1 - 4000 : 1
- Power Rating: 0.12 Kw - 15 Kw
- Gearbox Sizes: 28, 40, 50, 63, 75, 90, 110, 130, 150
- Other Accessories: Solid Input Shaft, NEMA Input Flange, Special Dimensions



NWS Series Worm Gearbox

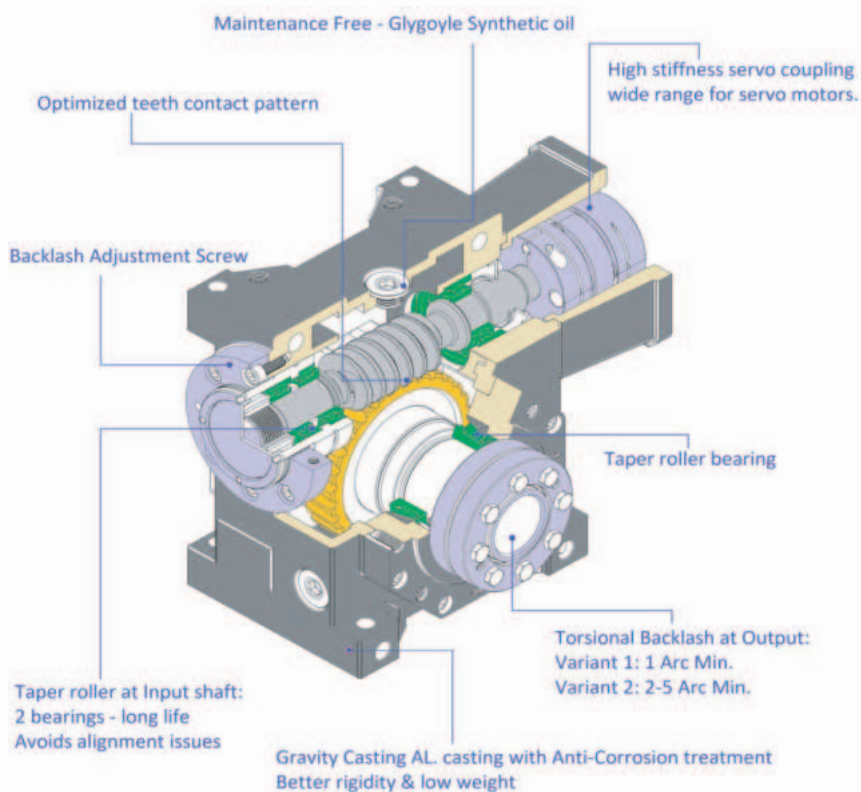
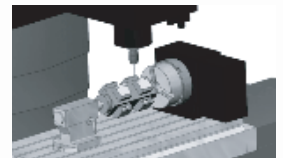
FEATURES

- Gear Ratio Availability: 5:1 - 4000 : 1
- Power Rating: 0.12 Kw — 11 Kw
- Anti-Corrosion special **BULLET COATED** Aluminium body to resist from atmospheric oxidation, water jets, acids, alkalis, detergents and mortar. It has high melting point 240 Degree C.
- It can resist salt spray for more than 1400 hours.
- NSF-H1 registered **Glygoyle** VG460 oil to meet FDA requirement **FKM Anti-Microbial oil seals** — FDA Compliant High Temperature seals resist heat and thermal expansion to support optimal functionality and long service life and to resist hot water, steam and typical cleaning agents.
- **SS-304** output shaft for corrosive environment & **SS-316 shaft for food grade operation.** **SS-316 bolts**
- Other Accessories: Solid Input Shaft, NEMA Input Flange, Special Dimensions.



NWP Series 'LOW BACKLASH' Worm Gearbox

- **Sizes:** NWP-25 to NWP-110
- **Ratio:** 5.2: 1 to 100: 1
- **Backlash availability:** 1 Arc-Min, 3-8 Arc-Min
- **Input Flange made Compatible for all servo motors with couplings**
- **Output shaft variant:** Hollow key type, Solid Type, Hollow Shrink disc
- **Glygoyle Synthetic VG320/460 oil**



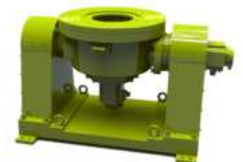
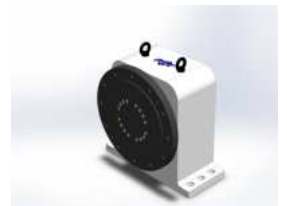
PTC Series Zero backlash planetary gearboxes

FEATURES

Patented system for wear regulation ensures consistent precision of the gearboxes during their entire service life !!

- **Torsional backlash** ≤ 0.1 Arc Min.
- **Lost motion** ≤ 0.6 Arc Min.
- **Constant precision over the entire lifetime**
- **Enormous tilting and torsional rigidity**
- **Lifetime** >20,000 operating hours
- **Efficiency** >90% at all speed
- **Quiet, compact and lightweight**
- **Torque range** 400 - 4500 Nm
- **Ratio range** 35:1 - 200:1
- **Gearbox Orientation:** Parallel, Right Angle

It is the combination of maximum torsional and tilting rigidity and minimal backlash, these gears achieve the highest accuracy, better controllability of the entire system, Low breakaway torque and patented Unique self-regulating gearing system...!!



PTL Series Planetary Gearboxes

FEATURES

- **Low Backlash:** 8 arc-min, 10 arc-min
- **Ratio:** 3 to 40
- **Quiet operation**
- **Higher torque**
- **Adapter-bushing connection**
- **Grease lubricated Maintenance-free**
- **Frame Size:** 062, 082, 120, 140, 160



Gearbox for Single Screw Extruders

FEATURES

- Gear design based on AGMA standard.
- The precision of gear grinding up to DIN 1~3/4 grade
- Embedded forced lubrication and cooling & filter system ensures excellent heat dissipation
- SKF Sweden origin bearings
- Incorporated with Japanese NOK oil seals ensures longer durability
- Excellent concentricity & levelness ensure the accuracy of screw connection



Gearbox for Twin Screw Extruders

Corotating & Counter-rotating Conical & Parallel type

- Featuring high torque and high output speed rate design
- Excellent Mixing and Plasticizing performance
- Coupled with thrust bearings assembled in multi-row tandem package
- The best transmission efficiency & high torque and sufficient safety coefficient
- The precision of gear grinding up to DIN 1~4 grade, operation noises kept below 70dB
- Forced lubrication and built-in the cooling & filter system ensures excellent heat dissipation
- Solid gearbox structure strength ensures minimum rotation vibration



Industrial Gear Units

PTIG-H Series Helical Gearbox

SPECIFICATIONS

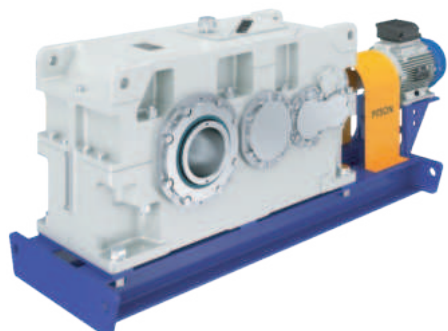
- **Torque Capacity:** 2.5 kNm - 60 kNm
- **Ratio:** 5:1 to 500:1
- **Output Shaft specifications:** Hollow shaft keyway, hollow shrink disc, solid output shaft



PTIG-R Series Bevel Gearbox

FEATURES

- **Torque Capacity:** 2.5 kNm - 55 kNm
- **Ratio:** 5:1 to 500:1
- **Output Shaft specifications:** Hollow shaft keyway, hollow shrink disc, solid output shaft
- **Drive unit option with complete baseplate with motor & coupling**



800 Series Cycloidal Drive

FEATURES

- **Torque Capacity:** 5 Nm - 209 kNm
- **Ratio:** 5:1 to 50000:1
- **Mounting:** Foot & Flange mount positions
- **Drive unit option with IE2, IE3, IE4 motor direct connections.**

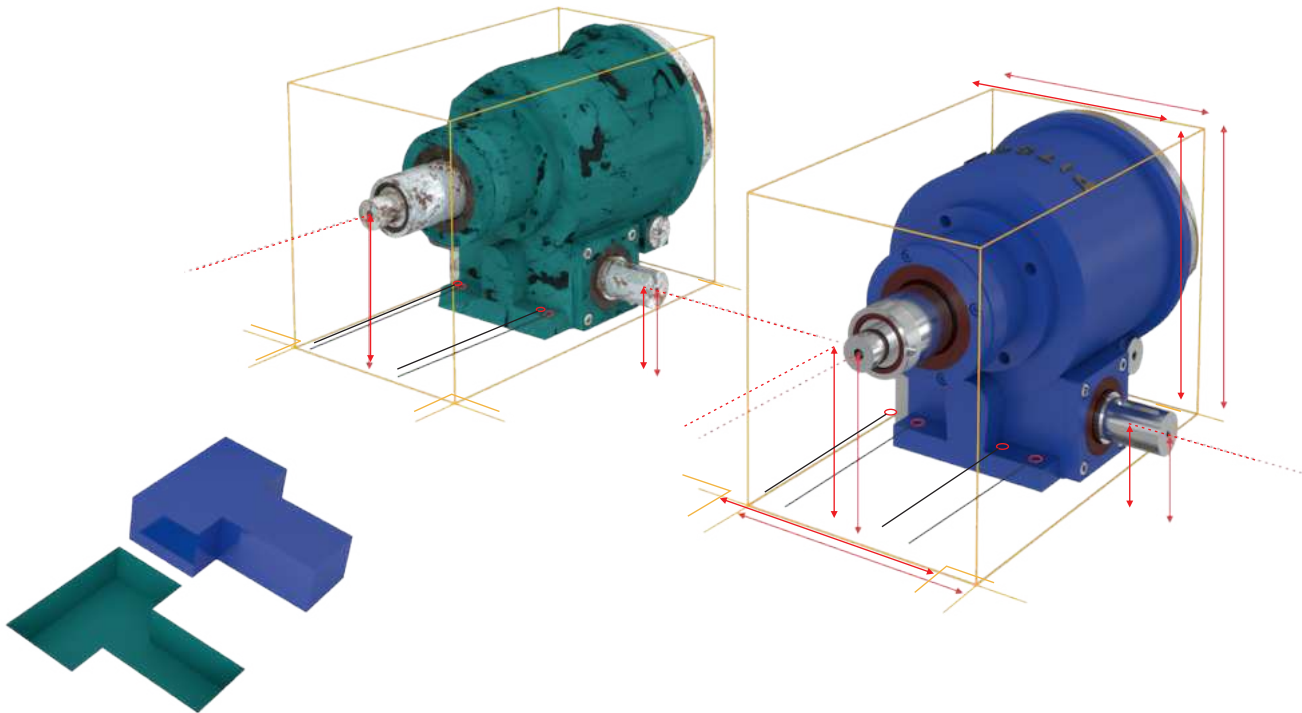


Customized Products - Custom Engineering

Customisation is the part of our standards..

Some projects require more than just the standard off-the-shelf solution. At PITSON, our experienced team can custom design a high-quality system based on your needs and specifications to improve your productivity & ease of installation.

From Detailed Investigation at Site to Final As-Built We take pride in what we offer to customers to put machine's performance and integrity first.



We provide below solutions & services under our custom engineering portfolio:

- . RAPID PROTOTYPING
- . DESIGN SUPPORT
- . CUSTOM AND STANDARD CUSTOM SOLUTIONS
- . LOW & HIGH-VOLUME PRODUCTION
- . JUST IN TIME DELIVERY

Customized Bevel Helical, Inline Helical & Parallel Shaft Helical Gearboxes.

- **Low Backlash:** upto <15 arc-min
- **Ratio Availability:** 5:1 upto 250:1
- **Power Rating:** upto 30 Kw
- **Output Shaft:** Hollow with shrink disc for backlash free rotation, Solid.



Servo Worm Gearbox

- **Low backlash:** <10 ArcMin, <15 ArcMin,
- **Torque Rating:** Upto 5000 Nm
- **Maintenance free operation**
- **Ratio Availability:** 7:1 to 500:1
- **Atex compliant***
- **All servo motor suitable flange**



K1 Series Precision Bevel Gearboxes

- **Ratio:** 1 to 35
- **Torque:** Upto 2000 Nm
- **Precision Variants:**
- **1.** < 3 Arcmin Backlash
- **2.** < 6 Arcmin Backlash
- **3.** < 10 Arcmin Backlash



Rack & Pinion

- **Teeth Module:** 1m to 10m
- **Class:** DIN 5, DIN 6, DIN 8, DIN 10
- **Milled cut, Harden & Ground**
- **Length:** 0.5 meter, 1 meter, 2 meters and others



Bevel Gearbox For Harsh & Washdown Environment

- **Ratio Range:** 2 to 70
- **Power rating:** 0.5 hp to 5 hp
- **304SS stainless steel gearbox & motor**
- **All steel internal gearing**
- **Spiral bevel gearing**
- **IP69K compliant**
- **Maintenance Free FDA approved synthetic grease, lubricated for life.**
- **Antimicrobial FKM Shaft seal packed with food grade grease and ss wearing ring and springs**



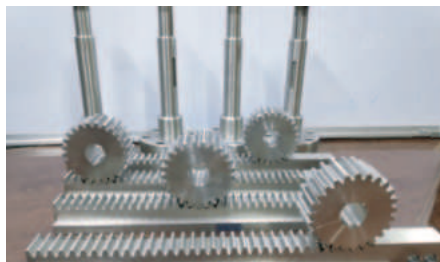
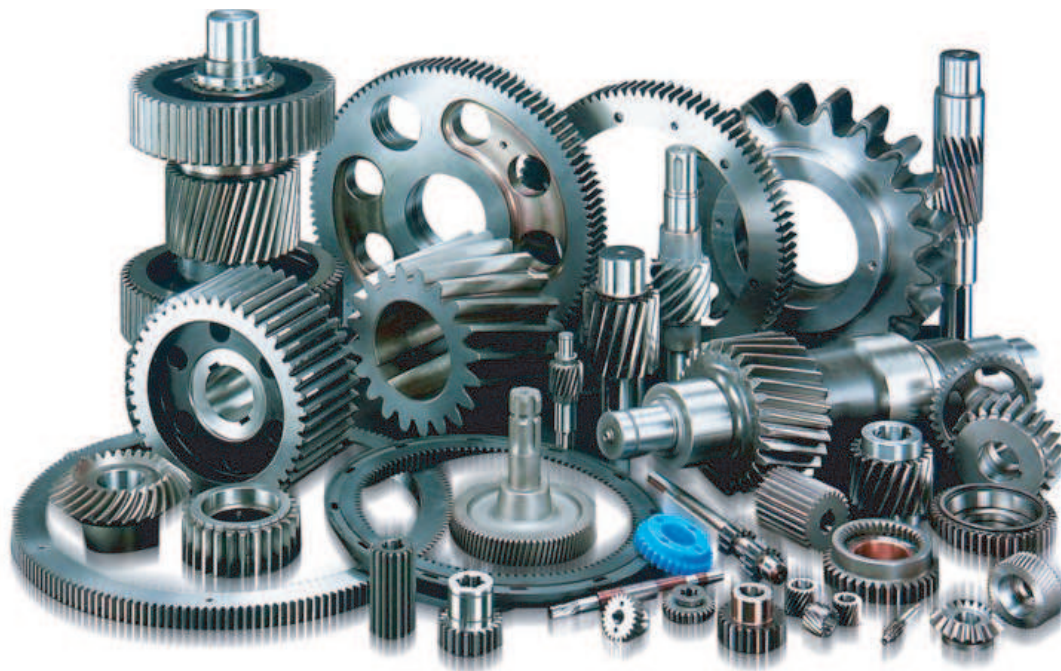


PITSON TRANSMISSION TECHNOLOGIES
Gearing Solutions

Spare parts

With 50 years practical experience and strict quality management, no matter if you want to design new gears or reverse engineered, we have all the solutions for your requirement.

We make gears as per design, as per samples or as per drawings to meet all requirements of customers.





PITSON TRANSMISSION TECHNOLOGIES
Gearing Solutions

Our Clients





PITSON TRANSMISSION TECHNOLOGIES
Gearing Solutions

Pitson Transmission Technologies
52/A2, Jintan Udhyognagar,
Surendranagar - 363002,
Gujarat, India

+91 9428916549
+91 8141484976

sales@pitsongears.com
sales1@pitsongears.com